

Hillfort Orchards Apples & Archaeology



Whiteadder : the Historic Heart of the Lammermuirs

is a project that celebrates the Whiteadder Water valley through the eyes of its communities past and present and is being developed by a partnership between both Scottish Borders and East Lothian Council, archaeologists, artists and community groups.

The Whiteadder Water flows through East Lothian and the Scottish Borders until it meets the Tweed. The study area stretches from Garvald to Duns. From its source in the Lammermuir hills it meanders past picturesque villages like Abbey St Bathans, wooded valleys, and a treasury of sites of ancient significance, from the mesolithic to the medieval. People have lived, worked and travelled along its banks for thousands of years, and it continues to inspire artists and musicians today.

This landscape proposal forms part of the Creative Arts programme and aims to combine the Scottish Border's heritage of orchards, archaeological landforms and local food production in a community-based project that involves 2 primary schools that are local to the Whiteadder valley.

Orchards have strong local history connections with the original settled monks arguably bringing 'pomology' to Scotland. There are several local apple varieties such as White Melrose, Stobo Castle and Scrog. There is still an orchard at Priorwood Gardens in the precinct of Melrose Abbey which contains over 70 heritage varieties.

The proposal is to create an outdoor teaching space within an orchard setting in the school grounds of Duns Primary and Chirnside Primary. Apple trees will be planted in the shape of the local hillforts that have been mapped and documented through the Whiteadder project's archaeological investigations.

In the centre of the grove of trees created by the hillfort shapes spring flowering crocus will be planted to provide early nectar sources that will encourage pollinators. Autumn flowering Saffron crocus are also proposed for another harvesting opportunity.



The community archaeologists from AOC have already been working with Duns Primary School, taking pupils out into the landscape with a school visit to Duns Law to explore their archaeology as well as bringing the past into the classroom. Duns Law is a perfect location for learning about archaeology since it has remains from multiple time periods clearly visible on the ground: a 17th century redoubt and associated memorial stone; medieval rig and furrow; the hillfort itself, believed to be Iron Age; and later prehistoric settlement remains which overlie the hillfort ramparts.

For Chirnside Primary Preston Cleugh has been proposed as the local hillfort for the orchard pattern.

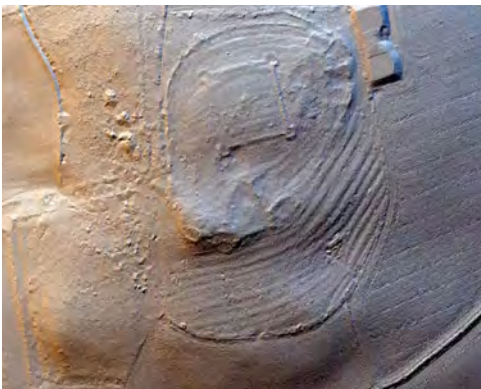
The Hillfort Orchards project could support cross curriculum learning opportunities such as healthy eating, cooking and growing all within a setting for outdoor teaching.

The proposal is to plant 6 different apple varieties with local and Scottish associations and are either cooking and dessert(eating) apple varieties.

Around the edges of the central space and to identify each apple variety will be a locally sourced timber seat engraved with the different apple names and a plan of the hillfort that is referred to.

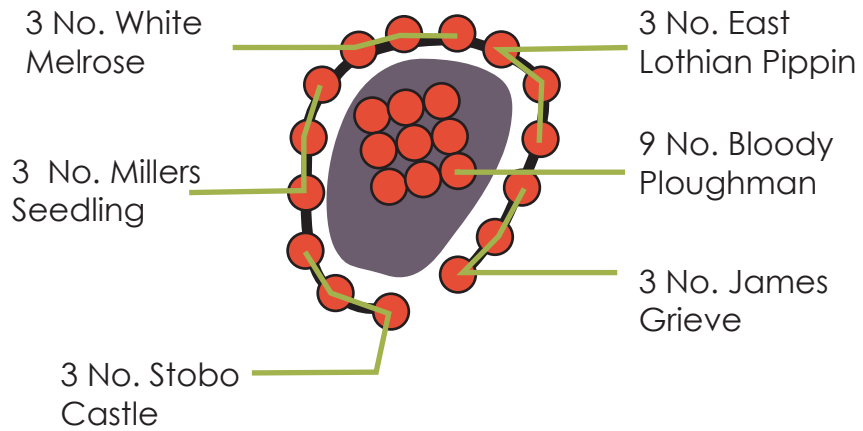
It could become a school and community planting event, organised for late autumn 2020, which would be the ideal time for both trees and bulbs.

And to tie this back to the Whiteadder project's archaeological origins, the children could bury something symbolic under each tree, ie a talisman/good luck/memory and create some new archaeology. Or there could be one combined element such as a time capsule buried in the centre of the orchard space to mark the occasion.

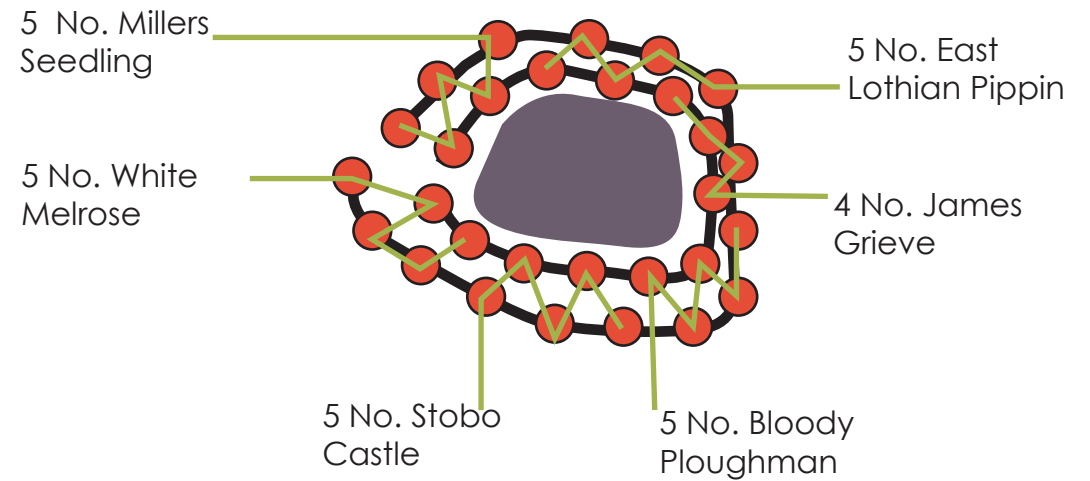


LiDAR images of Duns Law and Preston Cleugh Hill Forts
courtesy of AOC Archaeology

Duns Law Planting Layout



Preston Cleugh Planting Layout



At Planting
1.2m ht

3/4 years
First Fruit

At Maturity
3-4m ht

White Melrose	Stobo Castle
Miller's Seedling	James Grieve
Bloody Ploughman	East Lothian Pippin

Orchard Trees

	JAN	FEB	MAR	APR	MAY	JUN	JUL	AUG	SEP	OCT	NOV	DEC
PLANT												
BLOSSOM												
HARVEST												

White Melrose



c 1831 Origin Scotland
Cooking/Dessert Apple
Pollinator Group C
Flowers May. Pick mid September.

Stobo Castle



c 1900 Origin Scotland
Cooking Apple
Pollinator Group C
Flowers May. Pick late August.

East Lothian Pippin (The Baillie)



c 1883. Origin Scotland
Cooking Apple
Pollinator Group C
Flowers May. Pick mid August

James Grieve



c 1893 Origin Scotland
Eating/Dessert Apple
Pollinator Group C
Flowers May. Pick early September

Bloody Ploughman




c 1883 Origin Scotland
Eating/Dessert Apple
Pollinator Group D
Flowers May. Pick September

Millers Seedling (The Shah)



c 1848 Stock from Priorwood, Melrose
Eating/Dessert Apple
Pollinator Group C
Flowers May. Pick late August

Orchard Bulbs

	JAN	FEB	MAR	APR	MAY	JUN	JUL	AUG	SEP	OCT	NOV	DEC
PLANT												
FLOWER												



Crocus tommasinianus



Crocus vernus



Crocus biflorus 'Blue Pearl'



Crocus sativus -Saffron Crocus
autumn harvest of gold



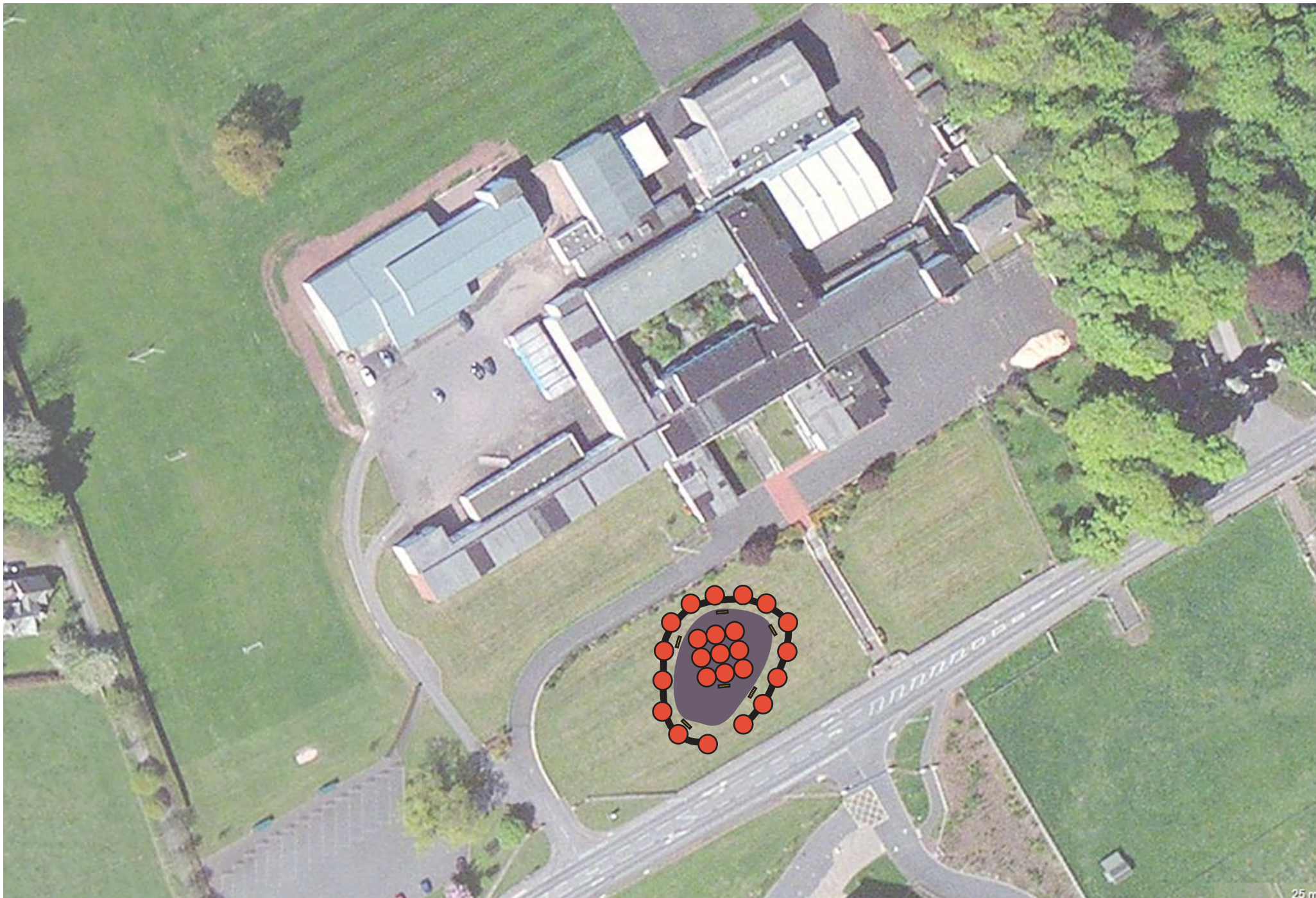
Crocus 'Snow Bunting'



Crocus chrysanthus 'Cream'



Crocus chrysanthus fuscotinctus



Location to be agreed with school

